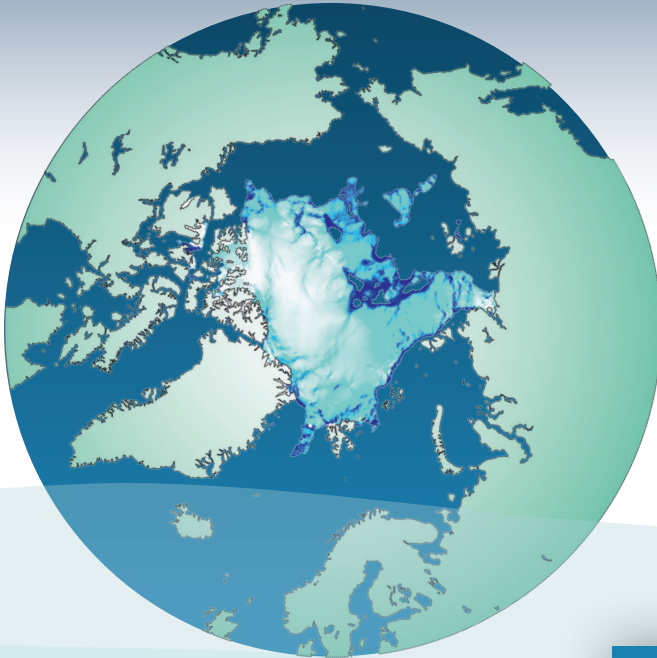




NANSEN ENVIRONMENTAL
and REMOTE SENSING CENTER

30 YEARS ANNIVERSARY SEMINAR

ViLVite Conference Center,
Thormøhlensgate 51, Bergen, Norway
24. and 25. November 2016



30 years
in science
1986-2016

NANSEN CENTER'S 30 YEARS

VilVite Conference Center,
24. and 25.

Day 1 - Thursday 24. November

0845-0930 Registration; Coffee and Tea

0930-0945 **WELCOME**, *Johnny A. Johannessen, NERSC*

0945-1045 **Global Sea Level Change**

KEYNOTE SPEAKER Anny Cazenave, LEGOS, France)

1045-1100 Coffee and Tea

1100-1300 **CLIMATE RESEARCH AND PREDICTION**

Chairman: Igor Esau, NERSC

The role of oceans in global-scale climate variability.

INVITED SPEAKER Tore Furevik, Bjerknes SKD, Norway

Norwegian Climate Prediction Model.

Francois Counillon, NERSC

Atmospheric boundary layer in climate models.

Richard Davy, NERSC

Arctic change and extreme weather.

Linling Chen, NERSC

Questions and discussion

1300-1330 Lunch

1330-1500 **POSTER SESSION**, including Coffee and Tea

ANNIVERSARY SEMINAR

Thormøhlensgate 51, Bergen, Norway
November 2016

1500-1700 **MODELLING AND FORECASTING**

Chairman: Laurent Bertino, NERSC

The Copernicus Marine Environment Monitoring Service

INVITED SPEAKER Pierre-Yves Le Traon (MERCATOR-Ocean, France)

Sea ice – ocean interactions. Satoshi Kimura, NERSC

Data assimilation in geoscience. Alberto Carrassi, NERSC

Physical-biological coupling. Annette Samuelsen, NERSC

Questions and discussion

1730-2000 **Mingling at the Nansen Center** with Pizza and Drinks

Day 2 - Friday 25. November

0900-1100 **OBSERVATION-BASED OCEAN AND SEA ICE RESEARCH**

Chairman: Morten W. Hansen

European Ocean Observing System,

INVITED SPEAKER Glenn Nolan, EuroGOOS Office, Belgium

Decoding peculiarities in the Fram Strait environment.

Jenny Ullgren, NERSC

Lofoten Basin eddies. Jan Even Nilsen, NERSC

Sea ice drift. Anton Korosov, NERSC

Questions and discussion

1100-1130 Coffee and Tea

1130-1230 **SUMMARY AND CONCLUSIONS**

1230 **ADJOURN**



NANSEN ENVIRONMENTAL and REMOTE SENSING CENTER

Marineholmen Svalbard Research Park
Thormøhlens gate 47 N-9171 Longyearbyen
N-5006 Bergen
NORWAY
Phone. +47 55 20 58 00
post@nersc.no www.nersc.no

with substantial donations from
GC Rieber Foundation and Trond Mohn and family



GCRIEBER
Climate Research Institute



Mohn-Sverdrup Center
Global Ocean Studies - Operational Oceanography