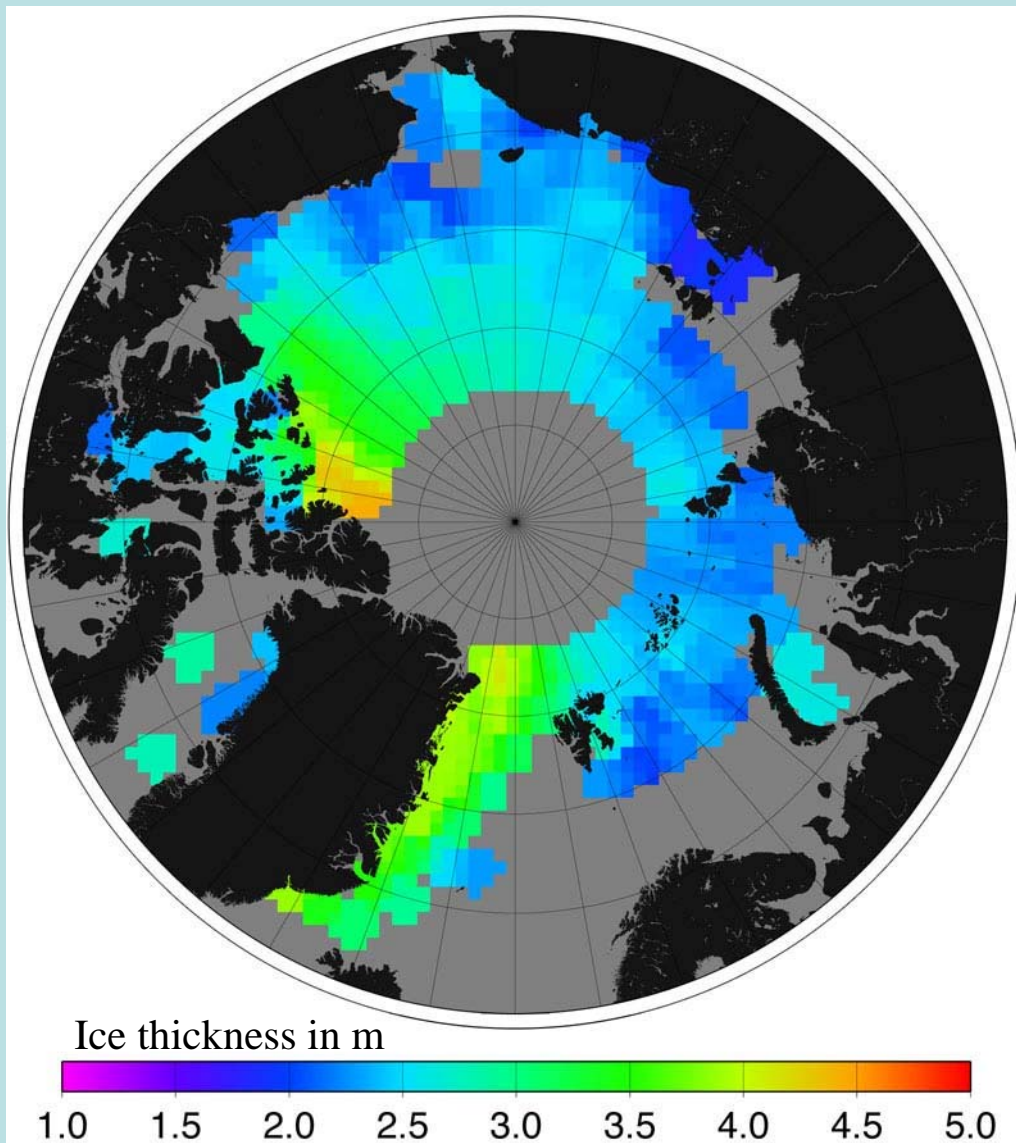


Arctic Sea Ice Thickness From RA



<http://icemon.org>

Example Ice Thickness Map From ERS RA Data



Average winter Ice thickness from Oct 93 to Mar01

Centre for Polar Observation and Modelling

University College London



ICEMON is supported by ESA GMES
Visit ► <http://earth.esa.int/gmes/>

Arctic Sea Ice Thickness From RA

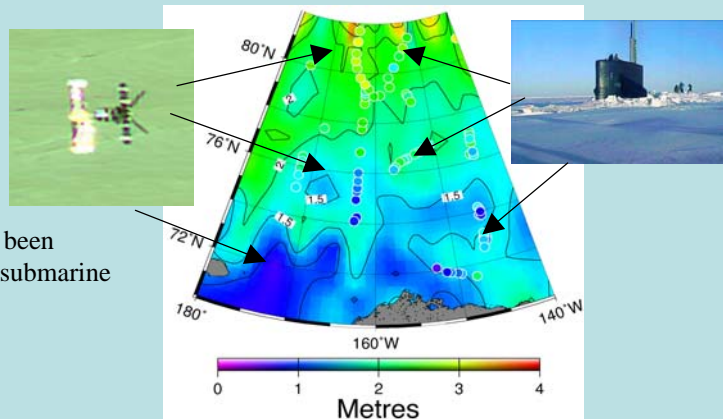
Platform:	ERS 1 & 2
Sensor:	Radar Altimeter
Spatial Coverage:	Northern Hemisphere
Spatial Resolution:	2 x 5 degrees
Temporal Coverage:	Winter Season (October to April)
Temporal Resolution:	Monthly
Media:	FTP
Format:	Demo maps are jpeg images

Abstract: Radar Altimeters allow direct measurement of Sea Ice freeboard which allows accurate determination of ice thickness. The altimeter estimates exclude areas of thin ice (<-0.5 m) and open water. The method has been validated through comparison with submarine-derived thickness measurements. Because the Altimeter makes a point measurement at Nadir rather than imaging the data must be accumulated over approximately a month to obtain sampling over the entire Arctic area. It is intended to provide monthly maps for each winter season as offline products.

Applications: Input to climate and ocean models.
Calibration of indirect ice thickness estimations from other sensors

Data access: <http://www.cpom.org/>

The RA derived thickness has been validated by comparison with submarine measurements.



**This product is part of the ICEMON portfolio
which provides monitoring products to the polar research and operations community
Go to ► <http://icemon.org>**



<http://www.cpom.org>
email swl@cpom.ucl.ac.uk



ICEMON is supported by ESA GMES
Visit ► <http://earth.esa.int/gmes/>