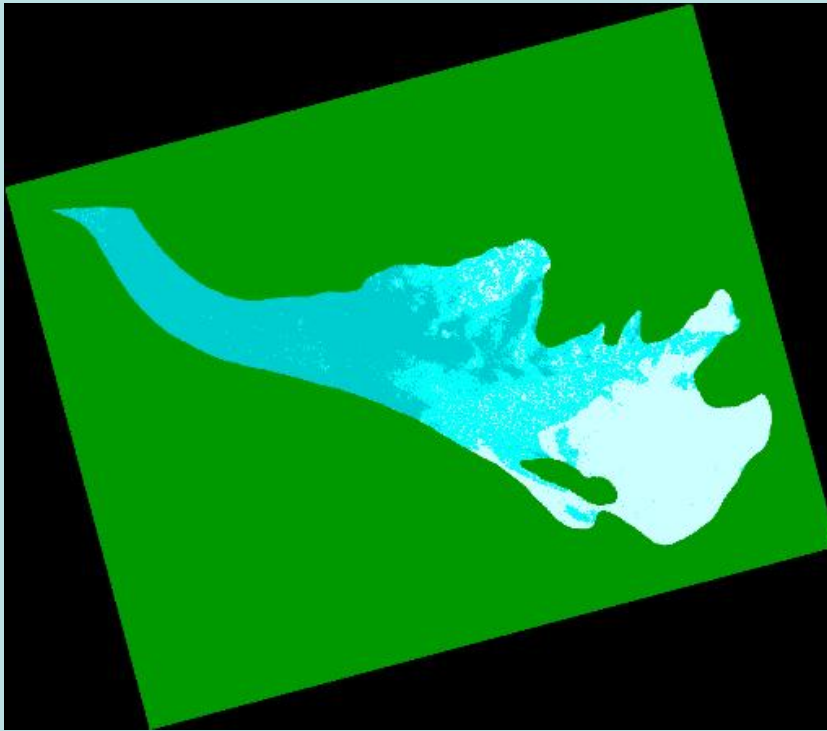


Glacier products for climate monitoring

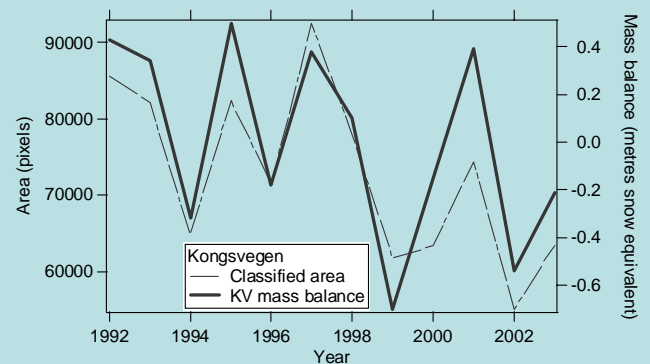


<http://icemon.org>



Glacier Surface Type (GST) shows different surfaces on the glacier. The white area is firn, the light blue area is superimposed ice and the blue area is glacier ice

A series of cryospheric climate monitoring products provided by ICEMON is based on a service developed by the FP5 IST project EuroClim. The service monitors sea ice for the whole Arctic Ocean, the Greenland ice sheet, glaciers in Svalbard and seasonal snow in Fennoscandia. A comprehensive set of sea ice, glacier and snow variables are monitored which is the basis for the product portfolio. For all basic variables digital maps are available. There are also products for various types of climate change indicators. These are typically derived from time series of basic variables. The EuroClim service does both long-term regular observations and climate projections for the Arctic and Europe using the observations available to improve climate modelling. The observations are primarily based on satellite data but do also include in situ data when such are available



The Glacier Balance Area, which in size follows annual mass balance

Snow products for climate monitoring

Platform:	ERS and ENVISAT satellites
Sensor:	SAR
Spatial Coverage:	Svalbard
Spatial Resolution:	20 m ²
Temporal Coverage:	From 1992 until now (updated annually)
Temporal Resolution:	Annual
Media:	Web service for search and ordering, FTP for downloading
Format:	Hierarchical Data Format (HDF)
Abstract:	Two glacier product types are available for Svalbard. The Glacier Surface Type (GST) shows different surface types on the glacier: firn, superimposed ice and glacier ice. A product is produced for each year for selected glaciers, allowing one to analyse changes in the extent of these areas. The Glacier Balance Area (GBA) product looks similar to the GST except that the balance area is shown, which in size follows annual mass balance
Applications:	Climate change monitoring
Data access:	http://www.euroclim.net



**This product is part of the ICEMON portfolio
which provides monitoring products to the polar research and operations community
Go to ► <http://icemon.org>**